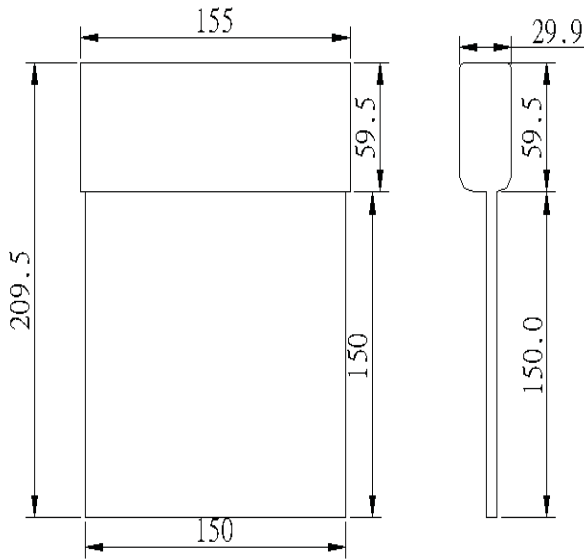


Picture



Dimension (mm)



Features

- CE/CB Approved EXIT SIGNS Model DL series
- Aluminum base and Acrylic panel
- Fixing: by Wall Mounting or Ceiling hanging
- Single or double face
- Energy-saving LEDs with long operating lifespan of up to 100,000 hours
- Over-charged and over-discharged battery protections
- Test button to test emergency lighting set in normal operating
- LED indicator to monitor battery operating
- LED color: Red, Green, Blue, Pink, Purple..etc
- The words/signs can be made by engraving or by paste print
- White/Green background or Transparency board are available
- Various of signage are available

Specifications

Items	Units	Parameter
Input Voltage	V	100-240VAC
Source Type	-	SMD LED 8*0.07W
Luminous Flux	lm	35.2
Display--sided	mm	150*150*5
Display material	-	Acrylic
LED Color	-	White
Beam Angle	?	140
Body Materials	-	Alloy
Life Time	Hr	>20000
Work Temperature	°C	0~50
Emergency Time	Hr	>1.5
Consumption Power	W	4
Battery	-	Ni-Cd 3.6V 300mAh
Emergency Convension Time	s	< 1
Charge time	Hr	48
One Pieces Packing	mm	205x40x215
Net Weight/pcs	g	400

Product Name	EMERGENCY LED SIGNS DL Series
Model No.	DL-150
Main Specification	8x0.07W SMD LED , Aluminium Alloy Housing Material
Product Size	155X210X30
MOQ	500PCS
Lead Time	35 days
Sample Delivery Time	3~10 days
Remarks:	

Packing Information

Packing:	White box			
Carton:	L(cm)		W(cm)	H(cm)
Carton Size:	51		42	23.5
Carton CBM:	0.051 M3			
Q'TY/INNER BOX:	1PCS			
Q'TY/CTN:	24PCS			
Gross Weight:	9.6KGS			
Net Weight:	10.1KGS			
Container Loading	1*20'		1*40'	1*40' HQ
Q'TY(PCS):				

